



## **REGULATED RETURN FUEL SYSTEM KIT**

**Fits 03-07 6.0L Powerstroke Diesel - Single or Dual Alternator**



## **Installation Guide**

**DD-60FS-STD-RRK-V2**



**INSPECT CONTENTS OF THIS KIT  
THOROUGHLY **BEFORE** STARTING  
THE INSTALLATION PROCESS!**

**IF YOU FIND A PROBLEM WITH YOUR PACKAGE:**

- **KEEP ALL OF THE PARTS & PACKAGING TOGETHER**
- **DO **NOT** ATTEMPT INSTALLATION OF THE PRODUCT**
- **PROMPTLY NOTIFY YOUR SELLING DEALER**
- **PROVIDE DEALER WITH PHOTOGRAPHS IF REQ'D\***
- **WAIT FOR FURTHER INSTRUCTIONS FROM DEALER**

**\*WE RESERVE THE RIGHT TO REQUEST  
PHOTOGRAPHS OF PACKAGING OR PARTS  
IN ORDER TO PROPERLY ADDRESS ANY  
SITUATION INVOLVING EITHER DAMAGED  
OR MISSING ITEMS.**

**THANK YOU FOR YOUR COOPERATION!**

**T**hank You for purchasing the Driven Diesel Regulated Return fuel system kit! Please read and familiarize yourself with this manual fully before proceeding with the installation of the kit. Also, always work safely. Make sure that there is plenty of light and adequate ventilation, and allow yourself several hours to complete the installation. After reading these instructions, if you feel that the installation is beyond your capability, please have this kit installed by a qualified mechanic.

Finally, the installation of this kit requires exposing the fuel system. Diesel fuel is flammable, and its vapor is explosive; therefore, common sense dictates that there be no smoking or open flame within 50 feet of the workspace. If any fuel spills, contain it and wipe it up immediately. Do not let the fuel stand on any painted surfaces of your vehicle, or damage to the finish may occur. We HIGHLY RECOMMEND having an appropriate fire extinguisher close by!

**Please don't hesitate to contact Driven Diesel should you have any questions.**

## **Contents of Driven Diesel 6.0L Regulated Return Kit**

Please use the following parts list and pictures to become familiar with this kit. ALL of the parts listed below should be contained in your kit. Please notify us if you are missing any parts **BEFORE** starting your installation! We will refer to the different fittings by their part number throughout the installation.

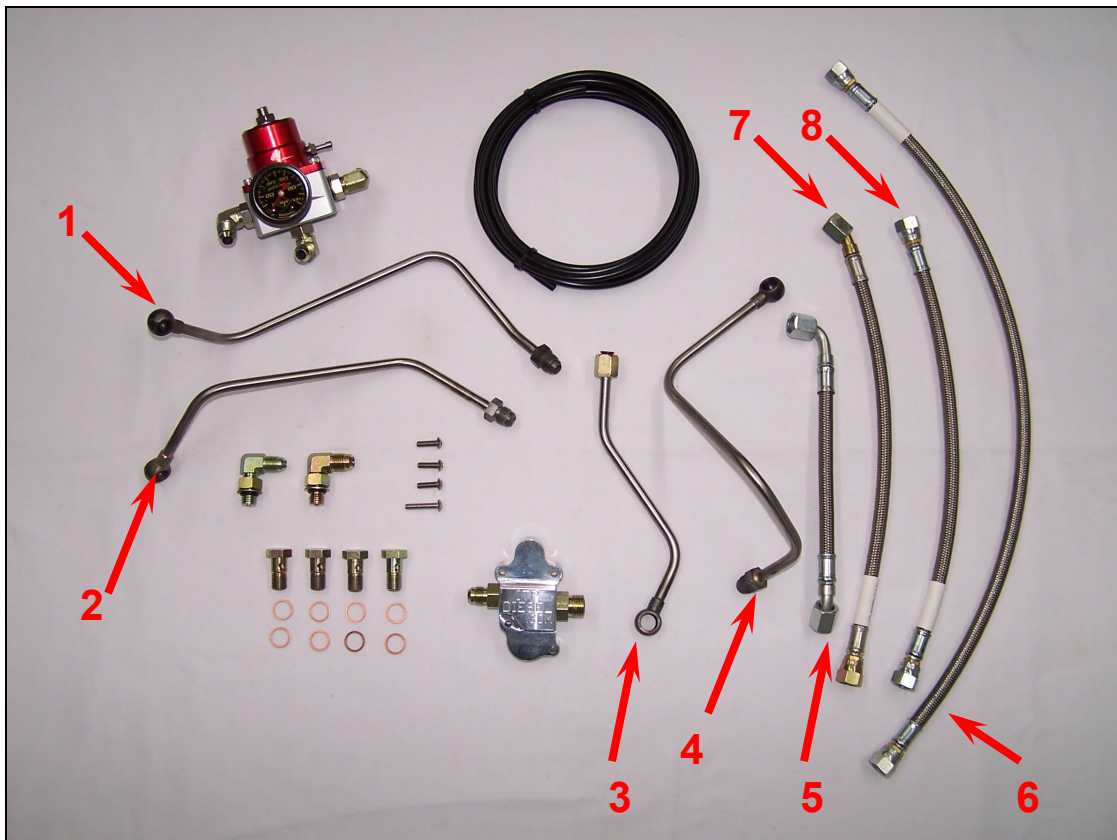
<b><u>Qty:</u></b>	<b><u>Part Number:</u></b>	<b><u>Description:</u></b>
1	60FS-DSF-TUBE	Driver Side Feed Tube Assembly
1	60FS-DSR-HOSE	Driver Side Return Hose Assembly
1	60FS-DSR-TUBE	Driver Side Return Tube Assembly
1	60FS-PSF-HOSE	Passenger Side Feed Hose Assembly
1	60FS-PSF-TUBE	Passenger Side Feed Tube Assembly
1	60FS-PSR-HOSE	Passenger Side Return Hose Assembly
1	60FS-PSR-TUBE	Passenger Side Return Tube Assembly
1	60FS-RTN-HOSE	Regulator Return Hose Assembly
1	60FS-REG-ASSY	Regulator Assembly (with Fittings, Bracket & Gauge)
1	60FS-RTN-FIT-ASSY	Custom Machined Return Fitting Assembly (with Fittings & O-Rings)
1	60FS-HW-PACK	Hardware Pack (Fittings, Screws, etc.) – SEE BELOW
1	60FS-BLOWDOWN	10' Length of Poly Blowdown Line

### **Hardware Pack Contents:**

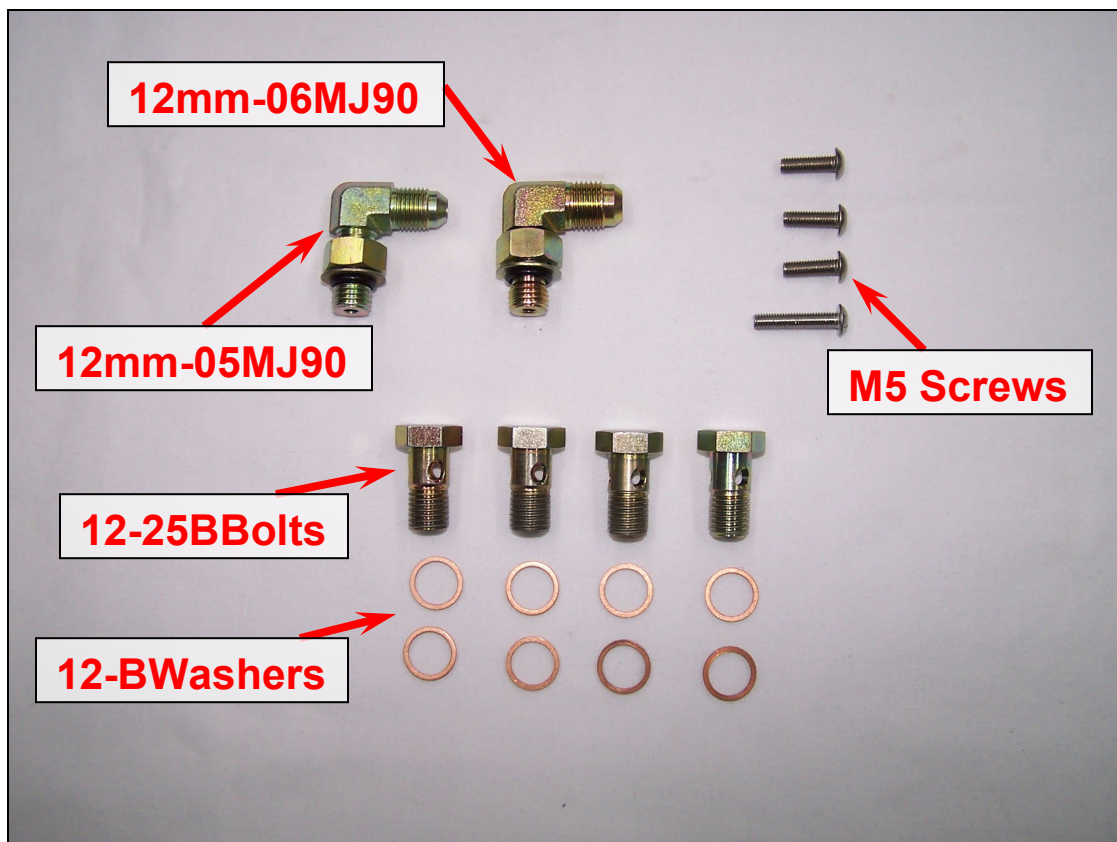
4	12-25BBolt	12mm Stainless Steel High Flow Banjo Bolts
8	12-BWasher	12mm Copper Banjo Bolt Washers
1	12mm-05MJ90	12mm O-Ring Boss to -05 Male JIC 90° Fitting
1	12mm-06MJ90	12mm O-Ring Boss to -06 Male JIC 90° Fitting
3	M5-0.8 x 20mm	M5 x 20mm Cap Screws
1	M5-0.8 x 25mm	M5 x 25mm Cap Screw
1	02MP-Plug	1/8" Male NPT Plug

**NOTE: The picture on the front cover of this document can also be used for reference.**





- |                  |                  |                  |                  |
|------------------|------------------|------------------|------------------|
| 1. 60FS-PSR-TUBE | 2. 60FS-DSR-TUBE | 3. 60FS-DSF-TUBE | 4. 60FS-PSF-TUBE |
| 5. 60FS-RTN-HOSE | 6. 60FS-DSR-HOSE | 7. 60FS-PSF-HOSE | 8. 60FS-PSR-HOSE |



Use the above diagrams to identify the different hoses and fittings in the kit

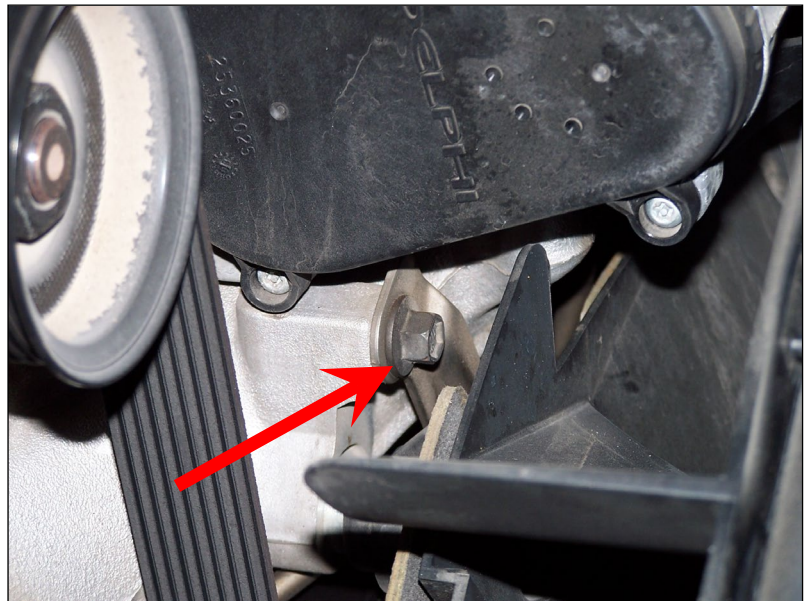
## Some of the Basic Tools Needed for Installation:

Standard Combination Wrench Set  
3/8" Drive Metric Socket Set  
T-27 Torx Wrench  
Screw Driver Set  
5/32" Hex "Allen" Wrench  
Bolt Cutters, Sharp Shears or Dremel Tool

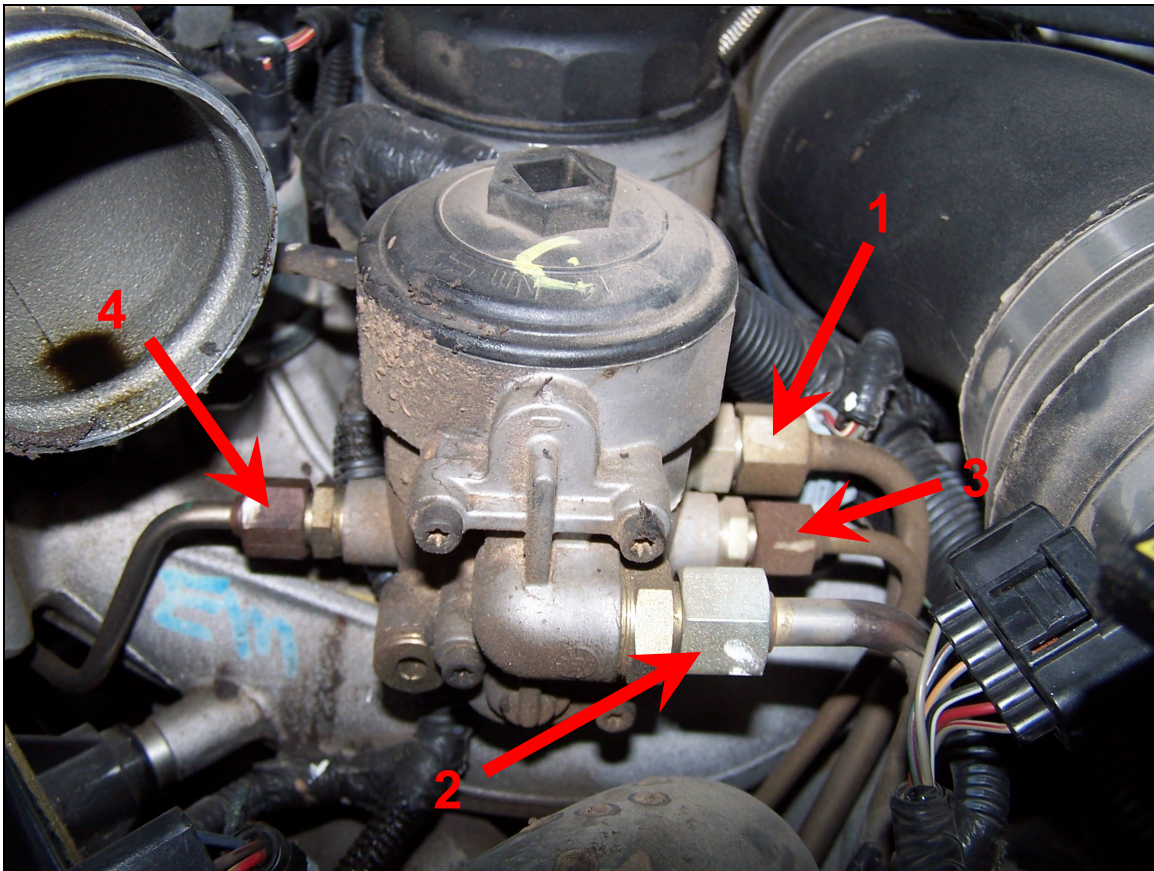
Metric Combination Wrench Set  
1/4" Drive Metric Socket Set  
1/2" Drive Breaker Bar  
Diagonal Cutting Pliers  
Anti-Seize  
Penetrating Oil

## Let The Fun Begin!

1. Begin by disconnecting both batteries (negative cables first, then positive). TIP: Write down your radio stations first.
2. To give it time to work, spray the 2 nuts on the drivers side exhaust manifold to up-pipe flange with penetrating oil. Hint, you're doing this from under the truck.
3. Remove entire airbox / intake system.
4. Remove both driver side and passenger side intercooler tubes.
5. Using 1 or 2 small flat blade screwdrivers, remove the fan shield from the top of the fan shroud. You will need to pull the rubber trim back to see where it needs to be pried back to be released from the shroud.
6. Remove fuel from the filter bowl by either removing the cap and sucking it out with a shop syringe or removing the test port plug and draining it into a cup or rag.
7. If you have a "dual alternator" truck, the lower alternator will need to be removed, along with its mounting bracket.
8. Locate and remove the bolt for the passenger side fuel line retaining bracket using a 10mm wrench. (see photo at right)
9. Disconnect the passenger side fuel line from the filter bowl using an 11/16" wrench.
10. Remove the passenger side banjo bolt and copper washers. Set these aside, they will not be reused.
11. Cut the passenger side fuel line in the middle and remove both pieces. This can be done with a sharp pair of shears, bolt cutters or a die grinder. If you use a die grinder, be sure to put tape or some other protection over the exposed fuel port in the head first.
12. Disconnect the driver side fuel line from the filter bowl using an 11/16" wrench.
13. Remove the driver side banjo bolt, washers and finally the driver side fuel line.







1. Fuel Supply Line (banjo style in later trucks)

2. Fuel Return Line

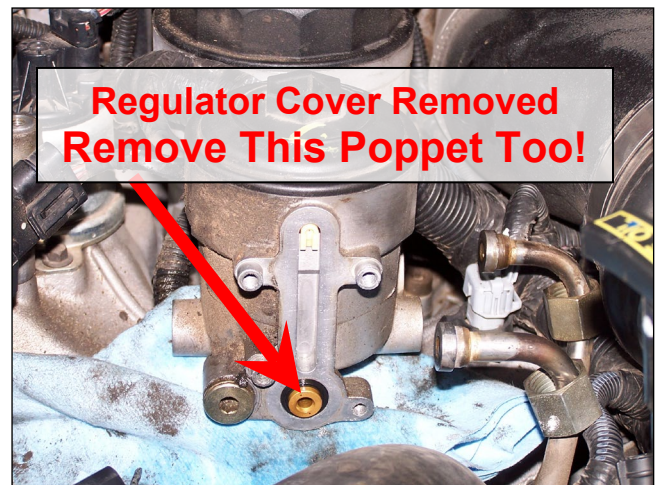
3. Driver Side Fuel Line

4. Passenger Side Fuel Line

14. Disconnect fuel Supply and Return lines from filter bowl using a 13/16" wrench (#1 and #2 in photo above).

15. Using a T-27 Torx bit, remove the (4) screws that retain the factory fuel pressure regulator housing. You will need to hold the housing in place when you remove the bottom (2) screws due to the regulator spring underneath. When all (4) screws are removed, carefully remove the housing and the spring and the poppet, none of these will be reused.

16. Remove the remaining fittings from ports 1, 3 and 4 (see top photo). Fitting 1 WILL BE RE-USED, DON'T LOSE THE O-RINGS AND DON'T MISPLACE THE FITTING!



**NOTE:** The 90° fittings you are about to install are “adjustable”. They can be oriented in any direction. The best method for installing these is to loosen the locknut fully and thread the fitting in as far as it will go by hand. If the orientation is close, tightening the fitting with a wrench may get it where needed, if it won't tighten to the right orientation, back it off to the desired position and tighten the locknut.



17. Locate the 12mm-05MJ90 and 12mm-06MJ90 fittings. Both fittings will have the same size threads at the O-Ring end, the 12mm-05MJ90 will have the smaller Male JIC end of the two.
18. Install the 12mm-05MJ90 fitting into port 3 (drivers side feed port) of the fuel bowl. Orient the fitting so it is pointing down and slightly toward the drivers side, but don't tighten the locknut yet.
19. Install the 12mm-06MJ90 fitting into port 4 (passenger side feed port) of the fuel bowl. Orient the fitting so it is pointing toward the oil filter at an upward angle, but don't tighten the locknut.
20. Reinstall the factory fitting into port 1 on the fuel bowl and tighten until it stops. Make sure the o-ring is still installed in the face of the fitting and reconnect the factory fuel feed line to port 1 and tighten. The fuel filter bowl should now look like the photo below:



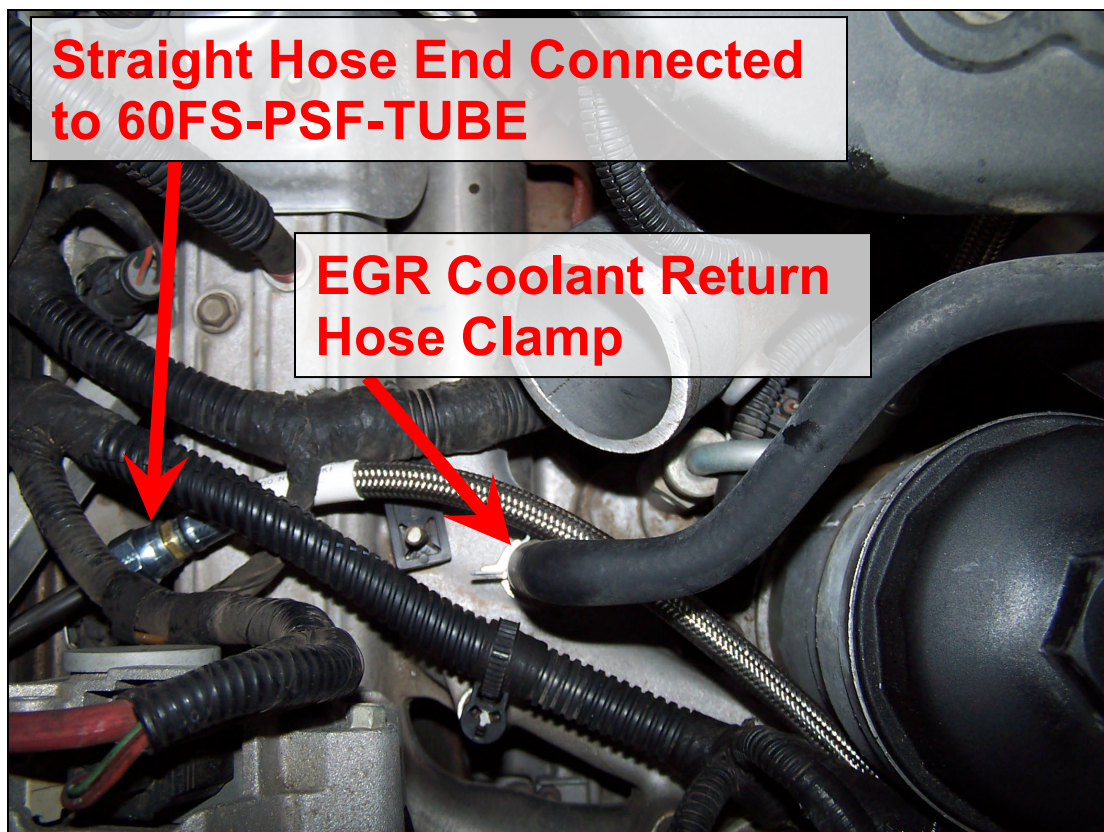
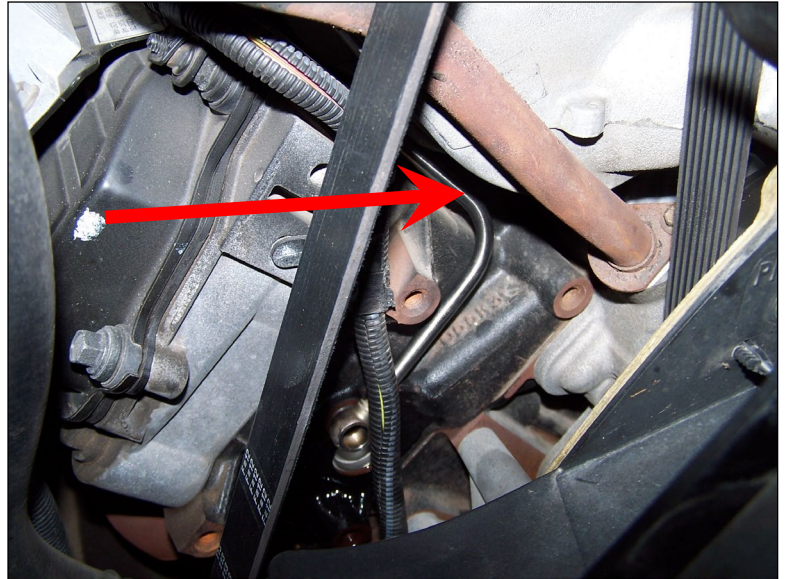
21. Locate the 60FS-RTN-FIT-ASSY (Custom Machined Driven Diesel Return Fitting Assembly). Make sure that BOTH new o-rings are in place and install using the supplied S.S. Screws. The longer 25mm screw is installed in the lower right position, closest to the radiator hose. Tighten all screws evenly using a 3mm allen wrench being careful not to strip the aluminum fuel bowl.
22. Connect the factory return line to the Driven Diesel Return Fitting, making sure that the o-ring is still in place first.
23. Locate the 60FS-DSF-TUBE. This tube will connect to the fitting in port 3 of the fuel bowl. Drop the tube down from the top and start the tube nut end 1-2 turns on the fuel bowl fitting to prevent dropping the tube...but leave it loose enough to move. In order to get the banjo end to line up properly with the port in the cylinder head, you may have to rotate the fuel bowl fitting, this is why we haven't tightened the locknut yet.
24. Place a new copper banjo washer onto one of the Driven Diesel banjo bolts. Install the banjo bolt into the fitting at the bottom of the 60FS-DSF-TUBE and install the second copper washer. This is a tight space to work in; using needle nose pliers may be helpful.
25. Align the banjo bolt with the port on the head and the tube with the guide machined into the front of the head and tighten to **20ft/lbs MAX (No more than 1/8 turn past "finger tight"!)**



26. Tighten the tube nut at the top of the 60FS-DSF-TUBE.
27. Tighten the locknut on the 12mm-05MJ90 fitting in port 3 of the fuel bowl.
28. Locate the 60FS-PSF-TUBE and 60FS-PSF-HOSE.

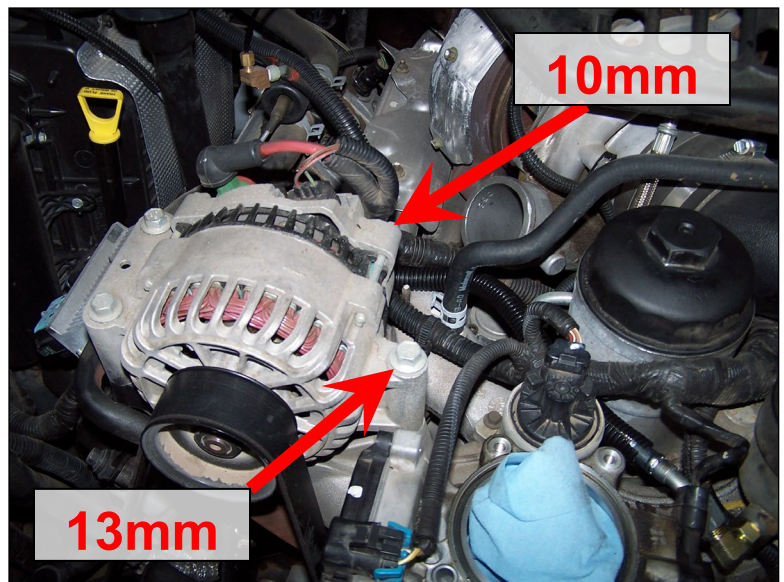
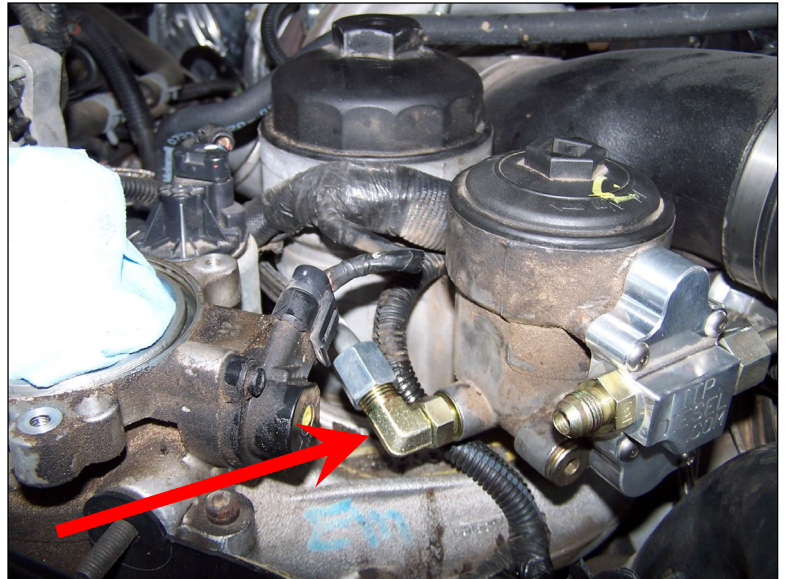
**NOTE: The hoses shown in these installation instructions do not have the black covering installed in order to make them more visible in the photos. We highly recommend leaving the covering on the hoses to prevent chaffing adjacent components as the S.S. braiding is quite abrasive.**

29. Position the 60FS-PSF-TUBE as shown in the photo at right.
30. Place a new copper banjo washer onto a Driven Diesel banjo bolt, insert the bolt in the banjo end of the 60FS-PSF-TUBE and install another copper washer on the other side. Install the banjo bolt in the port on the front of the passenger side cylinder head and tighten to **20ft/lbs**.
31. Position the 60FS-PSF-HOSE as shown in the photo below. Loosely connect the straight end of the hose to the end of the 60FS-PSF-TUBE.
32. Before proceeding, check the hose clamp on the EGR coolant return hose for interference with the 60FS-PSF-HOSE and reposition as necessary. See photo below.





33. Connect the 45° fitting of the 60FS-PSF-HOSE to the fitting in port 4 of the fuel bowl.
34. Adjust the angle of the fitting in the fuel bowl so that the 45° hose end is pointing slightly downward and tighten the locknut (you'll need to hold the fitting with one wrench while tightening the locknut with another). See photo at right.
35. Tighten both of the 60FS-PSF-HOSE fittings, first at the fuel bowl and then at the 60FS-PSF-TUBE. Make sure that the hose doesn't kink or twist when tightening the fittings. Using a 3<sup>rd</sup> wrench on the hose side of the straight fitting to prevent it from twisting may be necessary.
36. Using a 13mm and 10mm socket, remove the alternator bolts shown in the photo at right.
37. Locate the 60FS-REG-ASSY. The large hole in the regulator bracket is placed over the alternator boss where the 13mm bolt was removed and the small tab lines up where the 10mm bolt was.
38. Put a light coating of anti-seize on the threads of both bolts and reinstall them. The 13mm bolt gets tightened to 35ft/lbs.
39. Locate the 60FS-RTN-HOSE and install it as shown in the photo at right. The 90° hose end goes on the 60FS-RTN-FIT-ASSY and should be oriented in a horizontal to slightly downward position. The 45° hose end is installed on the bottom fitting of the regulator and will probably have a horizontal to slightly upward angle. The hose will form an "S" bend in the middle.
40. Tighten both hose ends securely, you will probably have to hold the hose to prevent it from moving while tightened.
41. Tighten the locknut on the bottom fitting of the regulator.

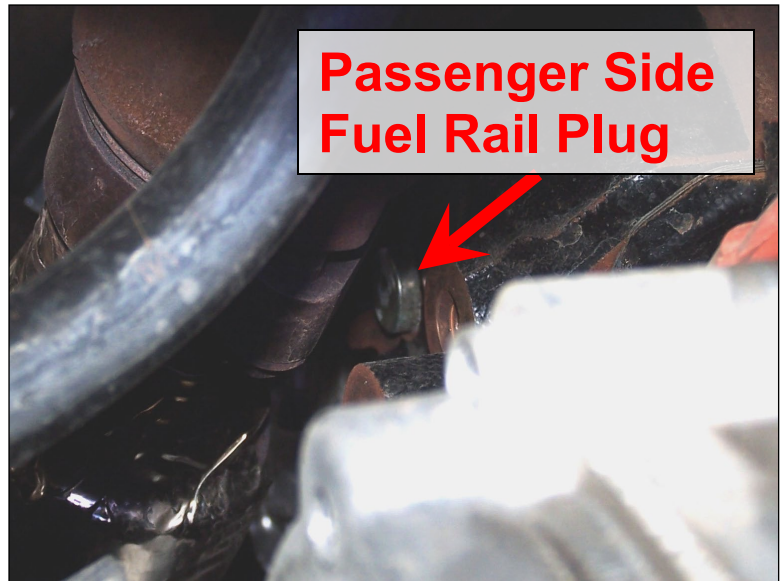




**NOTE:** In the next steps we will be working on the fittings on the rear of the cylinder heads. Access to these fittings is tight and can be difficult. We've supplied a long handled 6mm allen wrench to help, but because the fittings don't necessarily orient themselves ideally when installed, you may need to modify our tool (shorten or bend the handle) or use one of your own. These fittings are tight, but once broken free they can usually be removed quite easily by hand.

42. Using the supplied long handle 6mm allen wrench, remove the plug from the rear of the passenger side cylinder head. Use the photo at right to help locate the plug, it will be the only silver colored fitting on the rear of the head. This is the easier of the 2 plugs to remove. **NOTE:** there is still fuel in the rail and it **WILL** come out when you remove the plug, have some paper towels or shop rags handy!

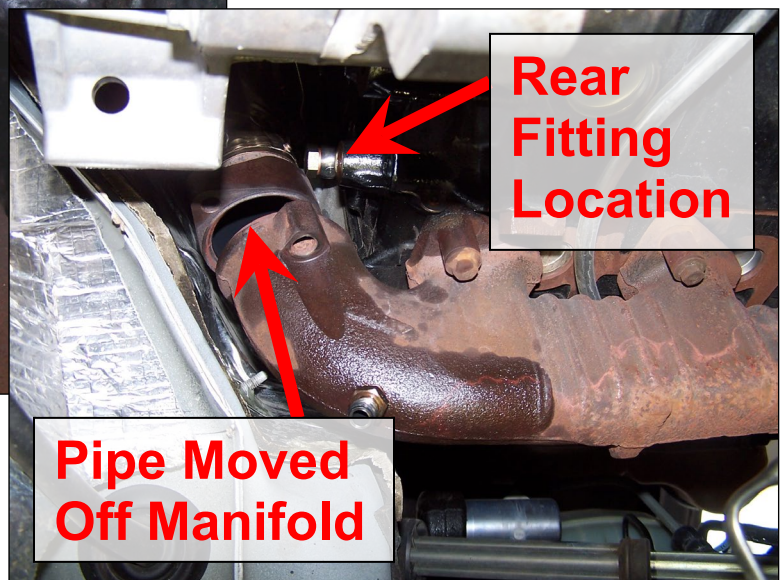
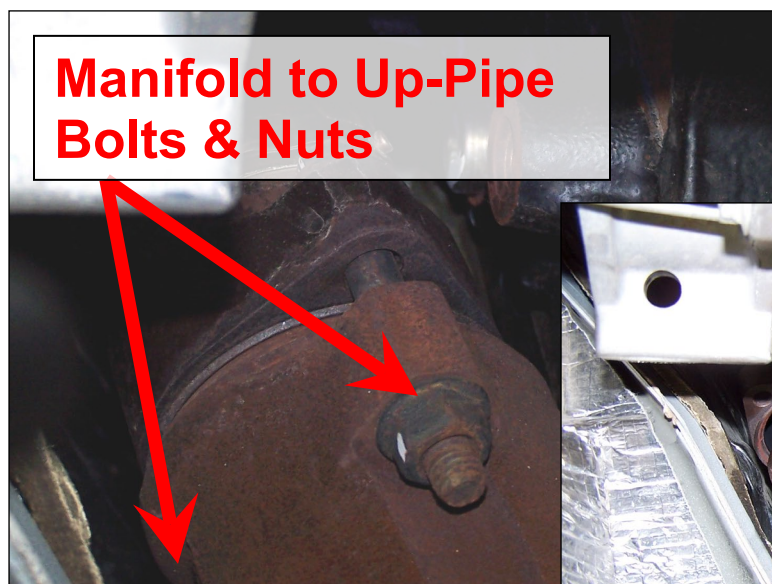
**HINT:** The passenger side fuel rail port can be accessed by reaching **OVER** the exhaust up-pipe. Once the fitting is broken loose, reach over the pipe to spin it out by hand. The same will work for installing the new fitting in a later step.



43. Using a 10mm closed end wrench (preferably) and a 1/2" deep socket, remove the bolts/nuts that secure the **driver** side up-pipe to the drivers side exhaust manifold. You should have soaked these in penetrating oil earlier in step 2. See the upper photo below.

44. Once the bolts are removed, the pipe needs to be pushed off the manifold toward the rear of the truck to allow additional clearance. This clearance will allow more room for tools as well as

the room needed to get the old fitting out and the new Driven Diesel fitting in. See the lower photo at right.





45. Using the supplied 6mm long handle allen wrench, remove the plug from the rear of the driver side cylinder head. Remember to have your paper towels or shop rags handy!

**NOTE: You are now ready to start installing the fuel lines on the rear ports of the engine. It will be very helpful to have an assistant at this point to help guide the lines down from the top and hold them while you install the fittings.**

46. Locate the 60FS-PSR-TUBE. From the top, feed the banjo end of the tube down the back of the passenger side cylinder head. The top end of the tube should end up just above the rear fuel injector wiring harness as seen in the photo to the right.

47. Place a new copper banjo washer onto a new Driven Diesel banjo bolt. Insert the bolt through the banjo end of the tube and install the second new copper banjo washer.

48. Start the banjo bolt into the port on the rear of the passenger side head, making sure to align the tube into the locating groove before running the bolt all the way in. Tighten the bolt to **20ft/lbs.**



49. Locate the 60FS-DSR-TUBE. From the top, feed the banjo end of the tube down the back of the driver side cylinder head. The top end of the tube should end up just above the rear fuel injector wiring harness as seen in the photo to the right.

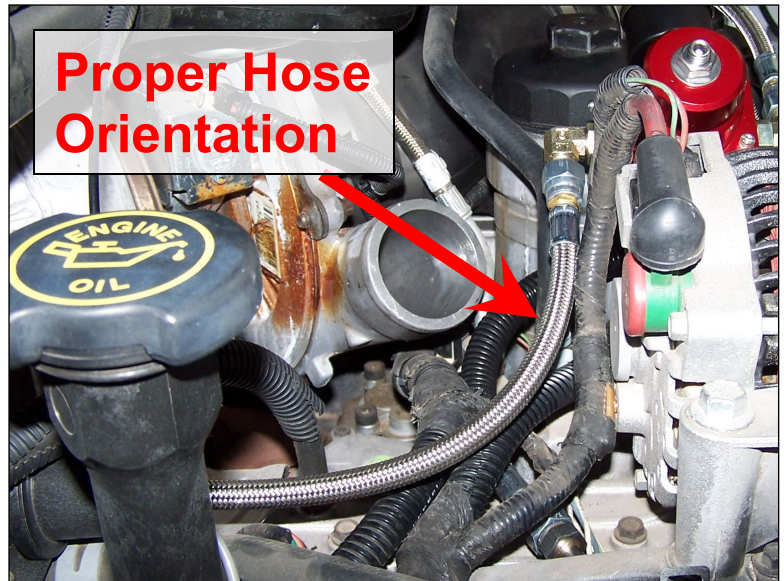
**NOTE: There is a heat shield on the rear of the engine. The driver side tube must be between the heat shield and the engine, toward the inside of the bolt boss for the shield. If the tube will not align with the port on the cylinder head, it is probably on the wrong side of the bolt boss for the heat shield, lift it out and guide it down on the other side of the boss and try again.**



50. Place a new copper banjo washer onto a new Driven Diesel banjo bolt. Insert the bolt through the banjo end of the tube and install the second new copper banjo washer. This is the hardest fitting in the kit to install, it may be helpful to use a thin pair of needle nose pliers or other method of holding the parts as it's very hard to get more than just a few fingers into this space.

51. Start the banjo bolt into the port on the rear of the driver side head, making sure to align the tube into the locating groove before running the bolt all the way in. Tighten the bolt to **20ft/lbs.**

52. Locate the 60FS-PSR-HOSE. Connect one end to the rear port on the fuel pressure regulator and the other to the 60FS-PSR-TUBE coming up from behind the passenger side cylinder head.
53. Adjust the angle of the fitting on the regulator so that the hose is running down at an angle but is not bound up or pressed too tightly against the wiring harness(es). Tighten the locknut on the regulator fitting while holding the fitting with a second wrench. See the photo at right.



54. Tighten the rear hose end at the 60FS-PSR-TUBE first.
55. Now tighten the hose end at the regulator, you will probably need to use a second wrench on the copper nut in the middle of the fitting to keep the hose from twisting while you tighten it.

56. Locate the 60FS-DSR-HOSE. Connect one end to the front port on the fuel pressure regulator and the other to the 60FS-DSR-TUBE coming up from behind the driver side cylinder head.

57. Adjust the angle of the fitting on the regulator so that the hose is lightly laying on the intake tube. Tighten the locknut on the regulator fitting while holding the fitting with a second wrench. See the photo at right.



58. Tighten the rear hose end at the 60FS-DSR-TUBE first.
59. Now tighten the hose end at the regulator, you will probably need to use a second wrench on the copper nut in the middle of the fitting to keep the hose from twisting while you tighten it.

## YOU'RE ALMOST DONE!

Before proceeding, it's time to **DOUBLE CHECK EVERY** fitting and bolt for proper tightness. Carefully go over each fuel line at both ends, checking both the line and the fittings for tightness. Once you've verified all of the fuel lines and fittings, check any bolts that have been removed and reinstalled up to this point. Once reassembly is complete, some of these fittings and hoses will not be easily accessible should you miss one and leave it loose!

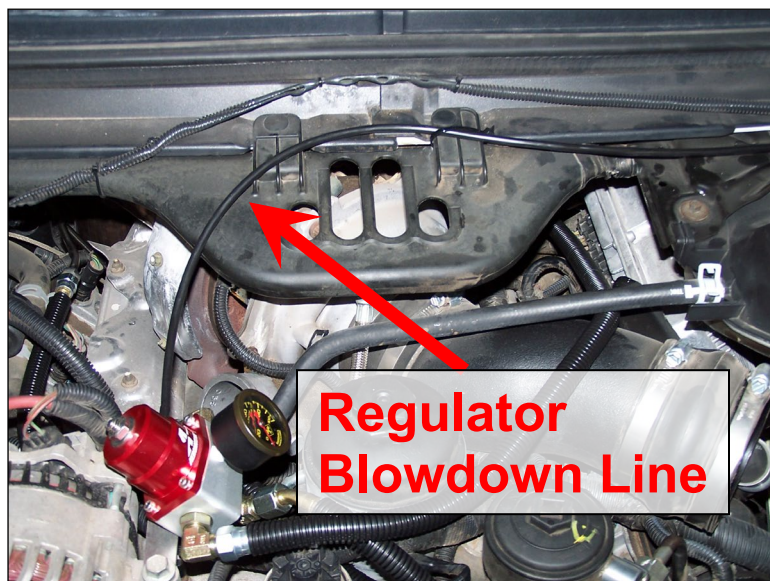
60. Now we need to check for leaks. Start by turning the key to the "on" position (do not crank or start the engine) and let the fuel pump run until it shuts off. When the fuel pump shuts off, turn the key to the "off" position.
61. Repeat the above 8-10 times to refill the fuel filter bowl, lines and rails and purge them of air.



62. Now, cycle the key to the “on” position and adjust the fuel pressure by turning the set screw in the middle of the regulator **CLOCKWISE** (in) until the pressure reaches 65psi. You may have to loosen the locknut on the regulator in order to turn it far enough and you may have to cycle the key more than once if the pump shuts off before you have it set.
63. Cycle the key to the “on” position and check each fitting and hose for leaks. The system is under pressure now so they should be pretty apparent. You may have to cycle the key several times to inspect every fitting and hose connection...take your time, this is important!
64. If any leaks are found, resolve them before proceeding. It’s much easier to address them now then when everything is back together later.

Now that we’re sure that there are no leaks and everything is tight, there are just a few more steps to get this wrapped up. The fuel pressure regulator has a “boost reference port” that is commonly used in super/turbocharged gas engine applications to raise fuel pressure under boost. We do **NOT** use this connection in our fuel system for boost reference. Instead, we have provided a 12’ length of poly tubing to route that port to atmosphere under the truck, just in case the diaphragm ever fails. We would rather dump the fuel on the ground under the truck than into the MAP line to the engine (run away hazard) or all over the top of the engine (fire hazard).

65. Locate the 60FS-BLOWDOWN line.  
Using the photo at right, connect the line to the brass nipple in the top half of the fuel pressure regulator. Route and secure this line, avoiding heat sources, so that the other end is under the truck and is pointing down at the ground. See #3 on the Troubleshooting Page for details.



66. While you’re under the truck working on the Blowdown line, reconnect the up-pipe to the exhaust manifold and tighten the nuts to 20ft/lbs.
67. Starting with step 7, reverse the disassembly steps and reinstall the alternator (dual alternator trucks only), intercooler tubes, intake and battery cables. Leave the fan shroud off until the engine has been run and a final leak check has been completed.
68. Start the engine and allow it to idle. While it’s idling, thoroughly inspect for leaks one more time as everything is once again under pressure and flowing constantly. Any remaining air in the system will also be purged during this time.
69. If any leaks are detected, shut the truck off and resolve them before proceeding. Come back and perform another leak check (step 67) and proceed once the problem has been resolved.
70. Once the system is leak free and the truck has had a few minutes to purge any remaining air and start to build some engine heat, adjust the fuel pressure and tighten the fuel pressure lock nut. We recommend setting the pressure at 65psi at normal operating temperature.

**CONGRATULATIONS! You’ve just completed the installation of the Driven Diesel 6.0L Regulated Return Fuel System Kit! Please Note: It is recommended that fuel filter service intervals be kept to no less often than every 15k miles (or 1x per year...whichever is first) due to the increase in fuel flow across the filter with a Regulated Return type fuel system.**

# Common Fuel System Issues – Troubleshooting Guide

If you run into any problems after the installation of your fuel system, please check this page for guidance before calling your dealer or Driven Diesel for help. The issues below represent the most common causes for technical support calls.

1. **FUEL LEAKING AT 90° FITTING ON FUEL FILTER BOWL** – The 90° metric fittings that we supply for the fuel filter bowl (12mm-05MJ90 & 12mm-06MJ90) sometimes include an extra washer that is not needed. We try to catch this and remove them during kit assembly, but we don't always get them all. If the fitting is installed with the extra washer in place, it will leak! Using the pictures below as a reference, remove the 90° fitting from the location that is leaking and check to see if the extra washer is in place. Remove the extra washer, leaving just the o-ring and the backup washer that is BEHIND the o-ring only (like the far right picture).



2. **THE REGULATOR MUST BE BROKEN – PRESSURE IS LOWER THAN DESIRED** – This is a multi-part problem, but the first thing you need to know is that if you don't have fuel spraying out of the hose connected to the brass nipple in the top half of the regulator, the regulator is **NOT** broken and is working fine. The fuel pressure regulator supplied with our kits is extremely simple, and the **ONLY** failure we have ever seen, since we started building fuel systems in 2001, has been a punctured diaphragm...which will leak fuel from the brass nipple. See below for some specific examples of where to look for your fuel pressure problem:
  - a. **AIR BLEED ORIFICE** – Per the large note in the photo on page 5 of these instructions, if you removed the white plastic air bleed orifice from the stock fuel filter bowl, you will never get the pressure up to where it should be. We typically see a max of about 40psi with the orifice removed. If you lost this part, the only way to replace it is to purchase the 3C3Z-9T517-AG kit from your local Ford dealership.
  - b. **AIRDOG II** – If you have an AirDog II (DF-165) pump that has replaced your factory fuel pump, you will need to adjust the fuel pressure at the pump. The ADII pumps are delivered from the manufacturer with the internal regulator set at 55psi. There is an adjuster screw / jamnut at one end. It is best to adjust the **DRIVEN DIESEL** fuel pressure regulator up (clockwise) several turns past the max pressure, **THEN** have someone adjust the ADII pressure adjuster until the **DRIVEN DIESEL** gauge shows about 70-75psi. Finally, adjust the **DRIVEN DIESEL** regulator down to 60-65psi. This will leave you with about 5-10psi of “overhead” pressure, which will help keep the pressure at the desired level when you are heavy on the throttle and the injectors are using more fuel from the rails.
  - c. **FASS** – If you have a high pressure FASS pump and are only getting 50-55psi at the Driven Diesel fuel pressure regulator, you may need to get the updated 75psi spring and Fitting from FASS. Older High Pressure FASS pumps were delivered with a 55psi regulator spring. Newer FASS pumps have a 65psi regulator spring. See our website for help determining which setup you have.
3. **FUEL LEAKING FROM BRASS NIPPLE OR POLY TUBING UNDER TRUCK** – The brass nipple in the top half of the fuel pressure regulator is a “boost reference port”. This is used to increase fuel pressure as boost increases...**IN GASOLINE APPLICATIONS!** We do **NOT** use this port in diesel applications because it poses serious risk of a “runaway” situation should the diaphragm in the regulator fail. Instead, we run a long piece of poly tubing from this port to a location under the truck, to make sure that fuel is not sprayed all over the engine in the event of a diaphragm puncture. In the event of a punctured diaphragm, contact us at 623-582-4404 to purchase a replacement.



# **S DIESEL, LLC (dba STRICTLY DIESEL AND/OR DRIVEN DIESEL\*) WARRANTY AND LIABILITY POLICY**

**MOST OF THE PRODUCTS SOLD BY S DIESEL, LLC, ARE DESIGNED TO INCREASE VEHICLE PERFORMANCE...USE AT YOUR OWN RISK!**

**Do not install or use any product(s) purchased from S DIESEL, LLC ("S DIESEL") until you have carefully read the following Warranty and Liability Policy (the "Warranty").**

## **PRODUCT WARRANTY POLICY**

Subject to the limitations, exclusions, and qualifications set forth below, the product or the products made and sold by S DIESEL (the "S Diesel Product" or "S Diesel Products") are warranted to Buyer as set forth in this Warranty. The installation of the S Diesel Products indicates that Buyer has read, understands and agrees to the terms and conditions of this Warranty. Any warranty on products that are made by another manufacturer which are resold by S DIESEL to Buyer is made to Buyer by the manufacturer of such products in accordance with and subject to all conditions and limitations of the manufacturer's warranty in effect on the date of the purchase by Buyer. S DIESEL makes no warranties to Buyer, express or implied, with respect to such products that are made by another manufacturer.

### **LIMITED WARRANTY**

The S Diesel Products (except S Diesel Products specified to have different warranty terms) are warranted to be free from defects in material and workmanship, under normal use and service for a period (the "Product Warranty Period") of ninety (90) days from date of delivery to Buyer, unless S DIESEL performs the work installing the S Diesel Products, in which case the Product Warranty Period shall be extended to equal the Service Warranty Period (as defined below under "SERVICE WARRANTY POLICY"). S DIESEL's liability under this Warranty is limited to repair or replacement at its option, subject to the provisions set forth herein, of any S Diesel Products which upon examination S DIESEL are found to be defective. Buyer shall prepay cost of transportation of defective S Diesel Products to S DIESEL for inspection.

S DIESEL shall not have any responsibility under this Warranty unless (1) the defect in an S Diesel Product results in a claim arising within the Product Warranty Period, measured from the date of delivery to Buyer, (2) the S Diesel Product, if installed by an installer other than S DIESEL, was properly installed, (3) the S Diesel Product was normally maintained and not subject to misuse, negligence or accident, and (4) the S Diesel Product, system components and/or accessories were not repaired or altered in such a way that in the judgment of S DIESEL the S Diesel Product's performance or reliability was adversely affected.

### **EXCLUSIONS**

Any of the above warranties by S DIESEL shall not apply if Buyer's vehicle is in an accident, misused, neglected, altered from the S Diesel Product's manufacturer original designs or specifications or serviced in connection with a warranty claim hereunder without prior written approval of S DIESEL.

### **REMEDIES EXCLUSIVE**

Repair or replacement of defective S Diesel Products in accordance with the Limited Warranty above shall be Buyer's exclusive remedy for and shall constitute satisfaction of any and all liabilities of S DIESEL with respect to any defect in any S Diesel Product whether based in warranty, contract, tort, negligence, strict liability or otherwise.

### **DISCLAIMERS AND LIMITATIONS**

**THE EXPRESS WARRANTIES SET FORTH ABOVE ARE EXCLUSIVE AND IN LIEU OF ALL OTHER WARRANTIES, CONDITIONS AND TERMS AS TO QUALITY OR FITNESS OF ALL PRODUCTS SUPPLIED BY S DIESEL TO BUYER, WHETHER WRITTEN, ORAL OR IMPLIED, STATUTORY OR OTHERWISE, INCLUDING WITHOUT LIMITATION, ANY WARRANTIES OR CONDITIONS OF MERCHANTABILITY OR FITNESS FOR A PARTICULAR PURPOSE, AND ALL SUCH OTHER WARRANTIES, CONDITIONS AND TERMS ARE HEREBY DISCLAIMED AND EXCLUDED BY S DIESEL. IN NO EVENT SHALL S DIESEL BE LIABLE FOR ANY LOSS OF ACTUAL OR ANTICIPATED PROFITS, LOSS OF ANTICIPATED BUSINESS, COST OF SUBSTITUTE PRODUCTS, LOSS OF USE OR DOWNTIME COSTS OR DELAY CLAIMS (WHETHER DIRECT OR INDIRECT) NOR FOR ANY OTHER SPECIAL, INDIRECT, INCIDENTAL OR CONSEQUENTIAL DAMAGES ARISING OUT OF OR RELATING TO THIS WARRANTY OR THE SUPPLY OF S DIESEL PRODUCTS TO BUYER, WHETHER BASED IN WARRANTY, CONTRACT, TORT, NEGLIGENCE, STRICT LIABILITY OR OTHERWISE. BUYER ACKNOWLEDGES THAT (A) THE PRODUCTS PURCHASED FROM S DIESEL WILL BE USED IN CONNECTION WITH ACTIVITIES, UNDER EXTREME CONDITIONS AND/OR SUBJECT TO MODIFICATIONS REQUESTED BY BUYER FOR WHICH THE PRODUCTS MAY OR MAY NOT BE SUITABLE; (B) THE WARRANTY OF SUCH PRODUCTS FOR PERFORMANCE IN CONNECTION WITH SUCH ACTIVITIES, UNDER SUCH EXTREME CONDITIONS AND/OR SUBJECT TO SUCH MODIFICATIONS REQUESTED BY BUYER IS NOT POSSIBLE; AND (C) ANY MANUFACTURER'S WARRANTY MAY BE VOIDED BY USE OF THE PRODUCTS IN CONNECTION WITH SUCH ACTIVITIES, UNDER SUCH EXTREME CONDITIONS AND/OR SUBJECT TO SUCH MODIFICATIONS REQUESTED BY BUYER. BUYER ACKNOWLEDGES THAT THE INSTALLATION OF ANY S DIESEL PRODUCTS THAT ARE NOT LEGAL FOR USE ON POLLUTION CONTROLLED MOTOR VEHICLES IS DONE SOLELY AT THE REQUEST OF BUYER AND ALL RESPONSIBILITY FOR ANY EFFECTS ON THE ORIGINAL VEHICLE MANUFACTURERS WARRANTY, ABILITY TO PASS ANY EMISSIONS INSPECTIONS OR FOR ANY FINES THAT MAY OCCUR DUE TO THE REMOVAL OF FEDERALLY MANDATED EMISSION CONTROL EQUIPMENT IS ON BUYER.** No employee or representative of S Diesel has the authority to make any representation, promise or agreement which in any way varies from the terms and conditions of this Warranty. No suit or claim based on any cause of action, regardless of form, arising out of or relating to this Warranty or any of the S Diesel Products supplied by S DIESEL may be brought by Buyer or anyone claiming by, through or under Buyer against S DIESEL more than one year after the date that such cause of action arose.

**IN THE EVENT BUYER DOES NOT AGREE WITH THE TERMS AND CONDITIONS OF THIS WARRANTY, BUYER MAY PROMPTLY RETURN THE PRODUCT TO S DIESEL FOR A FULL REFUND. THE PRODUCT MUST BE IN NEW, UNUSED AND RESELLABLE CONDITION, BE RECEIVED WITHIN FIFTEEN (15) DAYS OF THE ORIGINAL PURCHASE AND BE ACCOMPANIED BY A DATED PROOF OF PURCHASE (RECEIPT). PRODUCTS RETURNED IN NEW, UNUSED AND RESELLABLE CONDITION MAY STILL BE SUBJECT TO RESTOCKING/REPACKAGING FEES.**

**THE INSTALLATION OR USE OF ANY PRODUCT PURCHASED FROM S DIESEL INDICATES THAT BUYER HAS READ, UNDERSTANDS AND AGREES TO THE TERMS AND CONDITIONS OF THIS WARRANTY.**

## **SERVICE WARRANTY POLICY**

Subject to the limitations, exclusions, and qualifications set forth below, the service or services performed by S DIESEL (the "S Diesel Service" or "S Diesel Services") are warranted to Buyer as set forth in this Warranty. Buyer's initials below indicate that Buyer has read, understands and agrees to the terms and conditions of this Warranty.

### **LIMITED WARRANTY**

The S Diesel Services (except S Diesel Services specified to have different warranty terms) are warranted to have been performed in a workmanlike manner and to hold up under normal use and service for a period (the "Service Warranty Period") of twelve months from date the S Diesel Services are performed. S DIESEL's liability under this Warranty is limited to replication, subject to the provisions set forth herein, of any S Diesel Services which upon examination S DIESEL are found to have not been performed in a workmanlike manner.

S DIESEL shall not have any responsibility under this Warranty unless (1) the defect in an S Diesel Service results in a claim arising within the Service Warranty Period, measured from the date the S Diesel Service is performed, (2) the vehicle upon which the S Diesel Service was performed was normally maintained and not subject to misuse, negligence or accident, and (3) the vehicle upon which the S Diesel Service was performed was not repaired or altered in such a way that in the judgment of S DIESEL the S Diesel Service's durability was adversely affected.

### **EXCLUSIONS**

Any of the above warranties by S DIESEL shall not apply if Buyer's vehicle is in an accident, misused, neglected, or serviced in connection with a warranty claim hereunder without prior written approval of S DIESEL.

### **REMEDIES EXCLUSIVE**

Replication of unsatisfactory S Diesel Services in accordance with the Limited Warranty above shall be Buyer's exclusive remedy for and shall constitute satisfaction of any and all liabilities of S DIESEL with respect to any defect in any S Diesel Service whether based in warranty, contract, tort, negligence, strict liability or otherwise.

## **GENERAL PROVISIONS APPLICABLE TO BOTH PRODUCT AND SERVICE WARRANTIES**

### **ASSIGNABILITY OF WARRANTY**

This Warranty is for the exclusive benefit of Buyer and is not assignable.

### **WARRANTY CLAIMS PROCEDURE**

Warranty claim forms can be printed from the company websites (<http://www.drivendiesel.com> (Products) and <http://www.strictlydiesel.com> (Services)). A properly completed warranty claim form and a copy of the invoice for any defective Product or Service must be received by the Seller within the earlier of 30 days after the expiration of the Warranty Period or the incident giving rise to the claim. To qualify for an adjustment under this Warranty a defective Product must be returned prepaid to the Seller for inspection and must be accompanied by a dated proof of purchase receipt. In addition, the serial number of the defective Product, if any, must match the serial number on Buyer's invoice. All Warranty claims are subject to approval by the Seller and/or the Product's manufacturer. Buyer must pay all applicable service charges and taxes. Defective Products accepted for warranty compensation become the property of the Seller. To qualify for an adjustment under this Warranty a vehicle upon which S Diesel Services have been performed must be delivered to the Seller during Seller's hours of operation for inspection and must be accompanied by a dated proof of purchase receipt.

### **WAIVER**

Any failure of the part of S Diesel to insist on strict compliance with the Warranty Provisions shall no way constitute a waiver of such right. No claim or rights arising out of a breach of the Warranty Provisions by Buyer may be discharged in whole or in part by a waiver of the claim or right, unless the waiver is in writing signed by an authorized representative of S Diesel. S Diesel's waiver or acceptance of any breach by Buyer of any provisions of the Warranty Provisions shall not constitute a waiver of or an excuse for nonperformance as to any other provision of the Warranty Provisions nor as to any prior or subsequent breach of the same provision.

### **APPLICABLE LAW**

The Warranty shall be governed by the laws of the State of Arizona (excluding Arizona law with respect to conflicts of law).

\* Driven Diesel was formerly known as ITP Diesel, LLC and Sinister Diesel, LLC.